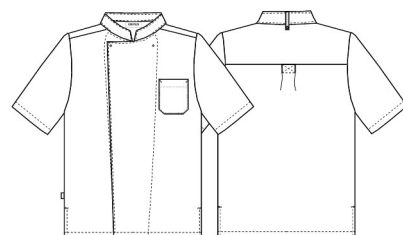


Date: 12-02-2020

2360-102-0-0-205

## Unisex chef/waiters jacket

**KENTAUR**<sup>®</sup>  
Work Wear of Denmark



- \* Style 2360 is large in size, see measurement chart
- \* Stand up collar
- \* 1 chest pocket
- \* Hidden press buttons
- \* Pleats in back
- \* Collar strap for bib apron
- \* 1/2 sleeves
- \* Side slits

**Quality:** 65/35% P/C, 210 g/m<sup>2</sup>

**Colour:** dark sand 205

**Construction:** 2X1 Twill

**Size:** 2XS-3XL



### Washing instructions

Can be washed according to ISO15797. The garments should always be washed before use. Wash before use, by recommended temperature. Colour loss can occur with the use of disinfectants.

Pressbuttons should be open. To avoid creases the machine should not be filled more than 2/3.

Measurement tolerance +/- 1 cm. Expected measurements after approx. 3 times wash. All measurements are in cm.

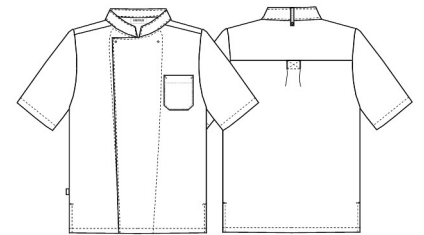
		2XS	XS	S	M	L	XL	2XL	3XL
Chest	A	106,5	114,5	122,5	130,5	138,5	146,5	154,5	162,5
Bottom	B	102,5	110,5	118,5	126,5	134,5	142,5	150,5	158,5
Sleevelength	C	28,5	29,5	30,5	31,5	32	33	33,5	34,5
Backlength	E	72	73	74	75,5	77,5	79,5	81,5	83,5

Date: 12-02-2020

2360-102-0-0-211

## Unisex chef/waiters jacket

**KENTAUR**<sup>®</sup>  
Work Wear of Denmark



- \* Style 2360 is large in size, see measurement chart
- \* Stand up collar
- \* 1 chest pocket
- \* Hidden press buttons
- \* Pleats in back
- \* Collar strap for bib apron
- \* 1/2 sleeves
- \* Side slits

**Quality:** 65/35% P/C, 210 g/m<sup>2</sup>

**Colour:** mocca 211

**Construction:** 2X1 Twill

**Size:** 2XS-3XL



### Washing instructions

Can be washed according to ISO15797. The garments should always be washed before use. Wash before use, by recommended temperature. Colour loss can occur with the use of disinfectants.

Pressbuttons should be open. To avoid creases the machine should not be filled more than 2/3.

Measurement tolerance +/- 1 cm. Expected measurements after approx. 3 times wash. All measurements are in cm.

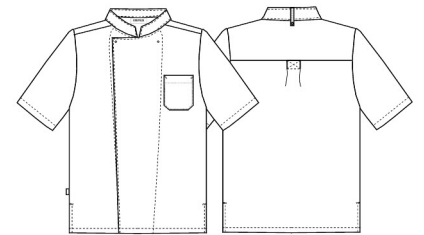
		2XS	XS	S	M	L	XL	2XL	3XL
Chest	A	106,5	114,5	122,5	130,5	138,5	146,5	154,5	162,5
Bottom	B	102,5	110,5	118,5	126,5	134,5	142,5	150,5	158,5
Sleevelength	C	28,5	29,5	30,5	31,5	32	33	33,5	34,5
Backlength	E	72	73	74	75,5	77,5	79,5	81,5	83,5

Date: 12-02-2020

2360-102-0-0-401

## Unisex chef/waiters jacket

**KENTAUR**<sup>®</sup>  
Work Wear of Denmark



- \* Style 2360 is large in size, see measurement chart
- \* Stand up collar
- \* 1 chest pocket
- \* Hidden press buttons
- \* Pleats in back
- \* Collar strap for bib apron
- \* 1/2 sleeves
- \* Side slits

**Quality:** 65/35% P/C, 210 g/m<sup>2</sup>

**Colour:** bordeaux 401

**Construction:** 2X1 Twill

**Size:** 2XS-3XL



### Washing instructions

Can be washed according to ISO15797. The garments should always be washed before use. Wash before use, by recommended temperature. Colour loss can occur with the use of disinfectants.

Pressbuttons should be open. To avoid creases the machine should not be filled more than 2/3.

Measurement tolerance +/- 1 cm. Expected measurements after approx. 3 times wash. All measurements are in cm.

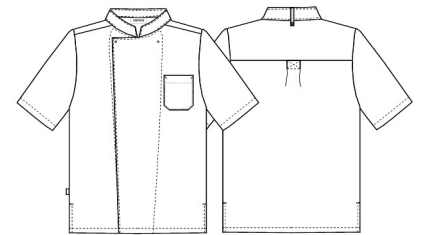
		2XS	XS	S	M	L	XL	2XL	3XL
Chest	A	106,5	114,5	122,5	130,5	138,5	146,5	154,5	162,5
Bottom	B	102,5	110,5	118,5	126,5	134,5	142,5	150,5	158,5
Sleevelength	C	28,5	29,5	30,5	31,5	32	33	33,5	34,5
Backlength	E	72	73	74	75,5	77,5	79,5	81,5	83,5

Date: 12-02-2020

2360-102-0-0-704

## Unisex chef/waiters jacket

**KENTAUR**<sup>®</sup>  
Work Wear of Denmark



- \* Style 2360 is large in size, see measurement chart
- \* Stand up collar
- \* 1 chest pocket
- \* Hidden press buttons
- \* Pleats in back
- \* Collar strap for bib apron
- \* 1/2 sleeves
- \* Side slits

**Quality:** 65/35% P/C, 210 g/m<sup>2</sup>

**Colour:** dark grey 704

**Construction:** 2X1 Twill

**Size:** 2XS-3XL



### Washing instructions

Can be washed according to ISO15797. The garments should always be washed before use. Wash before use, by recommended temperature. Colour loss can occur with the use of disinfectants.

Pressbuttons should be open. To avoid creases the machine should not be filled more than 2/3.

Measurement tolerance +/- 1 cm. Expected measurements after approx. 3 times wash. All measurements are in cm.

		2XS	XS	S	M	L	XL	2XL	3XL
Chest	A	106,5	114,5	122,5	130,5	138,5	146,5	154,5	162,5
Bottom	B	102,5	110,5	118,5	126,5	134,5	142,5	150,5	158,5
Sleevelength	C	28,5	29,5	30,5	31,5	32	33	33,5	34,5
Backlength	E	72	73	74	75,5	77,5	79,5	81,5	83,5