

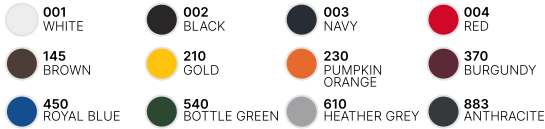
WUI24

B&C ID.203 50/50

FiftyFifty Sweatshirt Quality



Colors



Composition

B&C, NOW sourcing 100% More Sustainable fibres for all cotton-based products
50% Cotton (investing in Better Cotton*) / 50% Recycled Polyester - RCS certified

**By buying this product from B&C you're supporting responsible cotton production through Better Cotton.*

Size

XS, S, M, L, XL, 2XL, 3XL, 4XL

Packing

10 pcs/pack & 30 pcs/carton

Weight

270 g/m²

Details

B&C, NOW sourcing 100% More Sustainable fibres for all cotton-based products

This hooded sweatshirt features a soft and qualitative 50% cotton - 50% polyester fabric and the "B&C No Label" solution for easy rebranding. Its regular fit assures the perfect balance of long-lasting comfort and a contemporary silhouette. The B&C ID.203 50/50 is a unisex style designed to fit both men and women. Available in a wide range of 12 colours and 8 sizes at the best price/value proposition.

- Hood
- Kangaroo pocket
- Contemporary look designed for all types off activity
- Bottom hem and cuffs with 1×1 elastane rib for a perfect fit
- Two panels hood with tone-on-tone tubular drawcord
- Wide range of 12 colours and 8 sizes (XS-4XL)
- Regular fit
- Set-in sleeves
- Side seams
- "B&C No Label" solution for easy rebranding

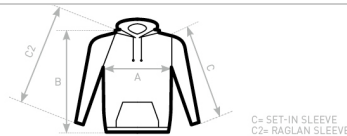
Sustainability



Care instructions



All our products are tested and approved using all main print techniques.



B&C ID.203 50/50 WU I24	XS	S	M	L	XL	2XL	3XL	4XL
A HALF CHEST	48	51,5	55	58,5	62	65,5	69	72,5
B BODY LENGTH FROM NECK POINT	64	66	68	70	72	74	76	78
C SLEEVE LENGTH	59,5	60,5	61,5	62,5	63,5	64,5	65,5	66,5

B&C USES ONLY RESPONSIBLY SOURCED FIBRES FOR ALL T-SHIRTS, POLO SHIRTS AND SWEATSHIRTS.

View on the website

